



Box Properties

--Description--

Name:

Type: Closed Box

Shape: Prism, square

--Box Parameters--

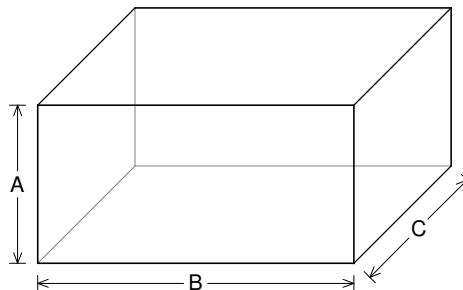
Vb = 1.5 cu.ft

V(total) = 1.699 cu.ft

Qtc = 0.797

F3 = 58.35 Hz

Fill = none



--External Dimensions--

A = 12 in

B = 24 in

C = 13.93 in

--Internal Dimensions--

A = 10.5 in

B = 22.5 in

C = 12.43 in

--Wall Thickness--

Front = 0.75 in

Side = 0.75 in

Driver Properties

--Description--

Name: SXX 10 D4

Type: Standard one-way driver

Company: RE Audio (2015)

--Configuration--

No. of Drivers = 2

Mounting = Standard

Wiring = Parallel

Drivers sum coherently = Yes

Dual voice coils = parallel

--Driver Parameters--

Fs = 55.41 Hz

Qms = 9.922

Vas = 0.203 cu.ft [0.406]

Xmax = 1.1 in

Sd = 50.17 sq.in [100.3]

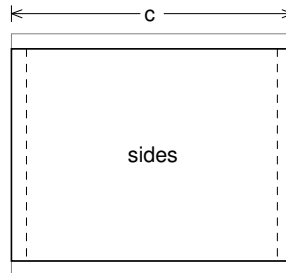
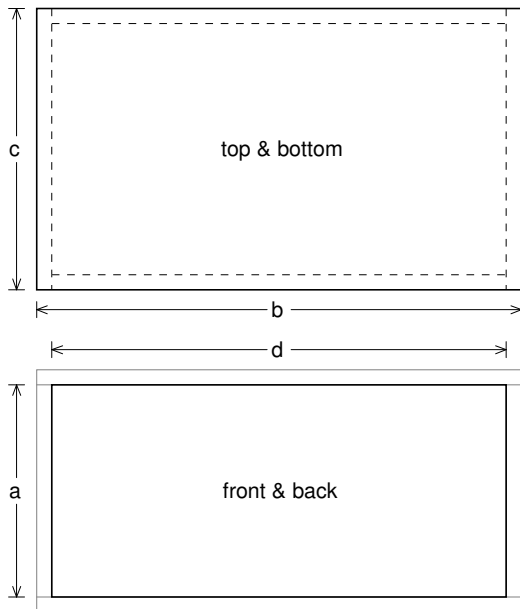
Qes = 0.797

Re = 2.006 ohms [1.003]

Le = 2.505 mH [1.252]

Z = 2.408 ohms [1.204]

Pe = 1200 watts [2400]



Box Parts

Box Shape: Square Prism

1 Top, 1 Bottom: depth (c) = 13.93 in
width (b) = 24, thickness = 0.75 in

1 Front, 1 Back: height (a) = 10.5 in
width (d) = 22.5, thickness = 0.75 in

2 Sides: height (a) = 10.5 in
depth (c) = 13.93, thickness = 0.75 in

--Driver Mounting--

Mounting: Front

Aim: All drivers face same direction



Wiring Diagram

